

# Richmond & Island Park

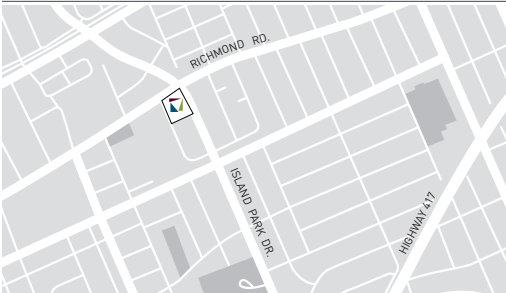
70 Richmond Rd, Ottawa, ON

Steps away from the Ottawa River, in Ottawa's thriving neighbourhood of Westboro, this brand-new, mixed-use development will be home to 936 SF of premium retail space. Addressing the demand for a new apartment development in the area, this 9-storey building at the intersection of Richmond Road and Island Park Drive will also include 103 residential units. Residents will be able to benefit from the excellent 100 bike score, 90 walk score, and 75 transit score. Construction is underway, with retail possession estimated for Q4 2026.

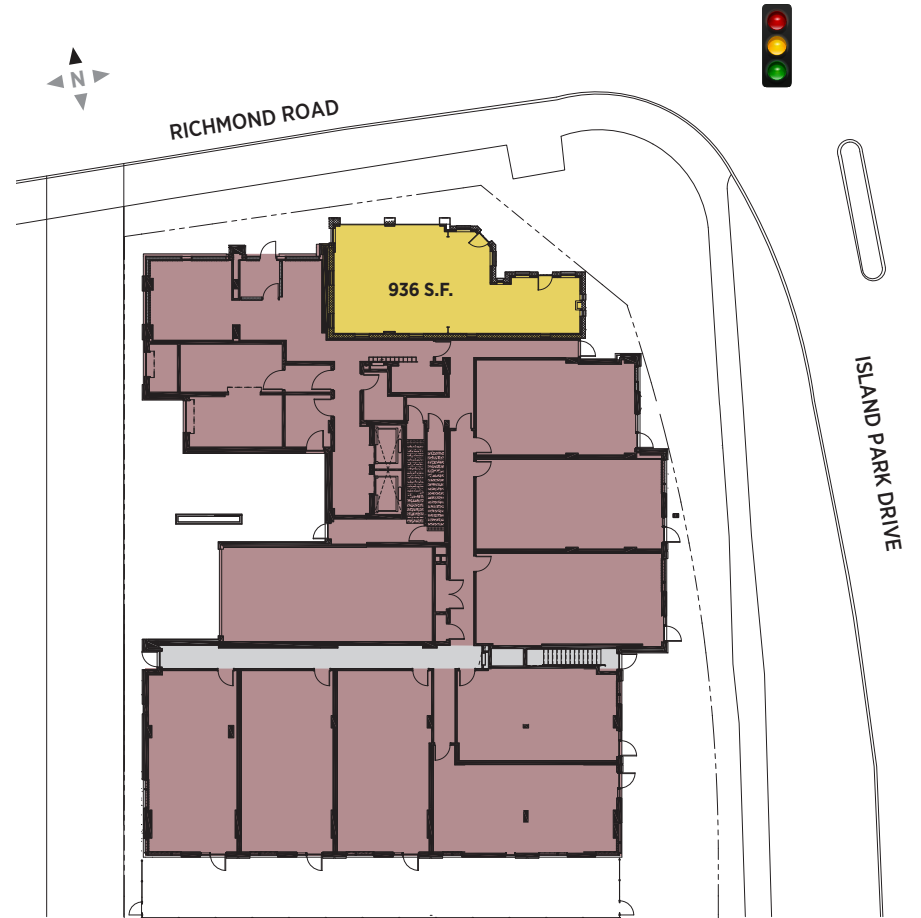
Size	
Future Retail	936 s.f.
Residential (103 units)	102,398 s.f.
Total GFA	103,334 s.f.

### Underground Parking

**Redevelopment Retail Possession**  
Q4 2026



Demographics	1 km	3 km	5 km
Total Population	13,089	70,348	215,585
Number of Households	6,127	33,878	106,121
Average Household Income	\$190,324	\$134,743	\$120,994
Median Age	42.1	39.7	38.5



■ Retail Leased   
 ■ Retail Available   
 ■ Residential